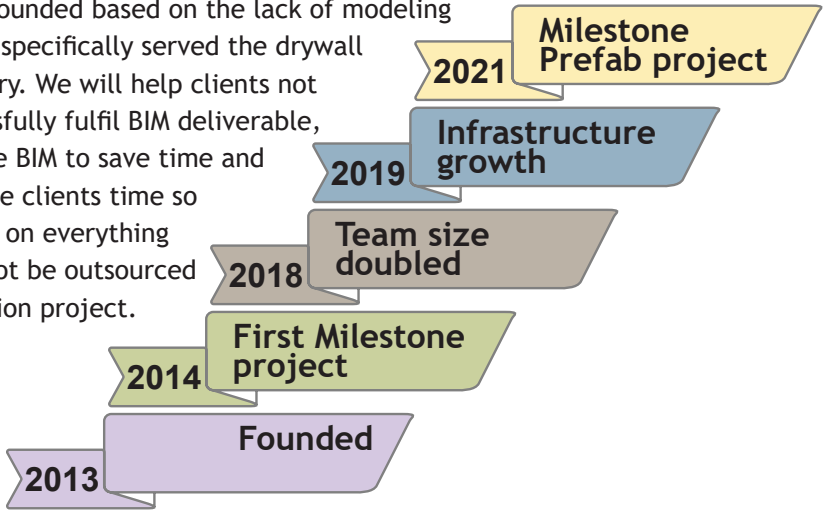


RFramer.com



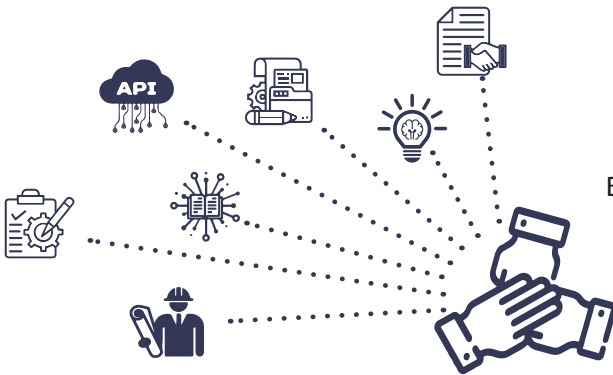
OUR JOURNEY

RFramer was founded based on the lack of modeling providers that specifically served the drywall framing industry. We will help clients not only to successfully fulfil BIM deliverable, but to leverage BIM to save time and money. We save clients time so they can focus on everything else that cannot be outsourced on a construction project.



OUR TEAM

Our team consists of an inter-speciality collaboration among disciplinary experts in Drywall Industry, Contractual language, BIM/software tool development, QAQC control, smart work and standards implementation.



ABOUT US

01

VISION

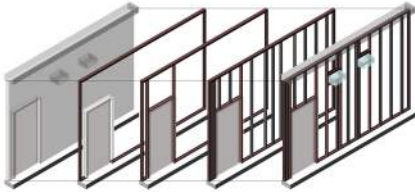
Integrating passion, teamwork and innovation through BIM in the drywall industry. Empowering drywall subcontractors by maintaining a standard of excellence.

02

PASSION

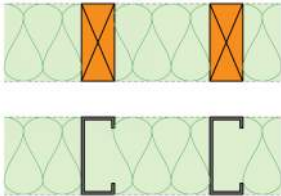
Exceeding project deliverables and providing quick and accurate virtual models enabling prefabrication of panels which can be shipped to site or rollformed for quick and accurate installation & reduced material waste.

OUR FOCUS



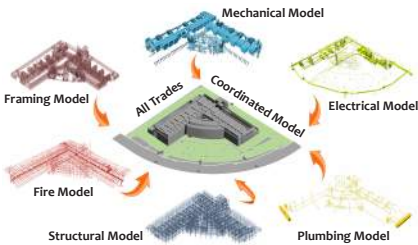
Building Information Modeling (BIM) and drafting services for the specialty Drywall and framing trade.

3D BIM Modeling



Metal/Wood stud framing per design, engineering, specifications, and details are generated using Strucsoft MWF Revit Plugin.

Light gauge steel and Lumber



Collaboration with MEPF Trades using their respective models to identify clashes and optimize the framing model where it matters the most.

BIM Coordination

WE EXCEL AT

Quantification

Creating schedules to extract quantities which can be used for ordering material and estimating cost.

P2265 - Framing Cut List				
Lbl	Qty	Member	Length	Prefab Length
B0	1	600SLT250-68	5' - 0 1/8"	
B1	1	600JR200-43	1' - 8"	
B2	1	600JR200-43	5' - 1 3/4"	
C0	2	600CH-43	22' - 6 1/4"	
C1	1	600JR200-43	22' - 6 1/4"	
C2	1	600JR200-43	22' - 1 3/8"	
C3	1	600JR200-43	0' - 4 5/8"	

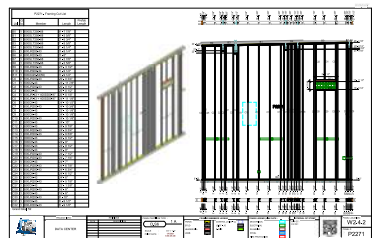
Custom made API Automation

Custom made project specific APIs and Plugins to automate repetitive tasks and provide quick turnaround times.



Shop Drawings

Color coded, dimensioned, and scheduled shop drawings with all necessary information for field installation, prefabrication, or rollforming.



Contract review/
Contract language



Design changes
and Tracking



Clash Detection
and Viewpoints



Report
Generation



Training/
Consulting



OUR SERVICES



Estimates



File uploads



Z-Clip drawings



Priority wall overlays
with MEPF trades



Priority wall
identification

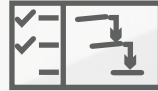
OUR PROCESS

INITIATION



- Project Inquiry
- Contract Review
- Client Confirmation
- Estimate Approval

PLANNING



- Kick off Meeting
- Project deliverables
- Timeline Review



EXECUTION

- File Setup
- Implement RFRamer standards
- Confirm framing assumptions/
request clarifications
- Create Critical framing model
- Refine detailed framing model
- Produce shop drawings

MONITORING



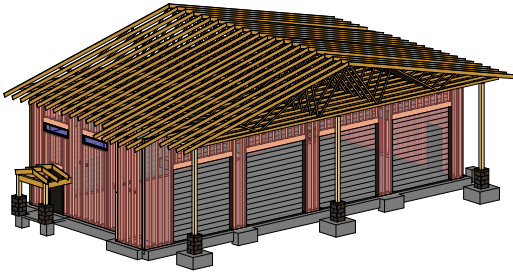
- Periodic client reviews
- Trade coordination
- Tracking Design changes,
RFIs & Issues
- Update as per approvals

CLOSURE



- Submissions & Transmittals
- As built model updates
- Project closure & feedback

OUR WORK



Building Type: Fire Station

Project Area: 31,663 SF

Year Completed: 2019

Scope: Structural wood and steel framing of Walls and Roof trusses as per sketches and inputs

Deliverables: 3D Revit modeling, CD set

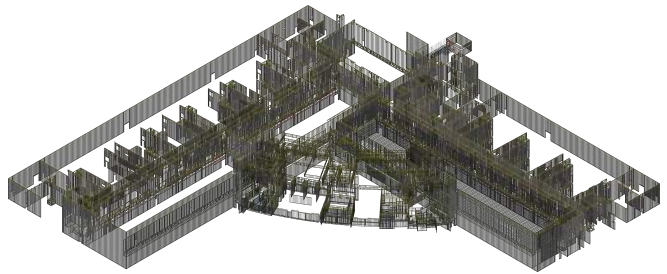
Building Type: Commercial
Office building

Project Area: 67,265 SF

Year Completed: 2021

Scope: Light-gauge steel framing of Walls and Ceilings

Deliverables: 3D Revit modeling with MEPFS Trade coordination, CD sets and Prefabrication panel drawings



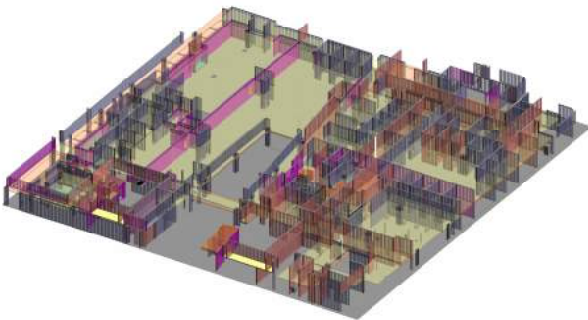
Building Type: Hospital

Project Area: 1,181,909 SF

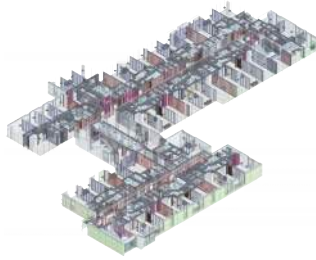
Year Completed: 2014

Scope: Light-gauge steel framing of Walls and Ceilings

Deliverables: 3D Revit modeling, Panel drawings

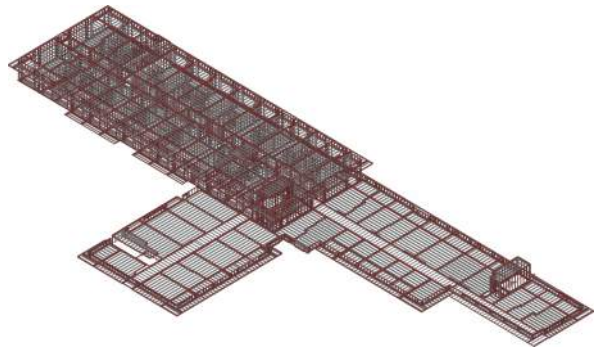


OUR WORK



Building Type: Residential
Project Area: 302,008 SF
Year Completed: 2020
Scope: Light-gauge steel framing of Walls and Ceilings
Deliverables: 3D Revit modeling with MEPFS Trade coordination

Building Type: Residential
Project Area: 170,860 SF
Year Completed: 2016
Scope: Light-gauge steel framing of Walls and Ceilings
Deliverables: 3D Revit modeling with MEPFS Trade coordination



Building Type: Recreational
Project Area: 1,215,291 SF
Year Completed: 2020
Scope: Light-gauge steel framing of Walls and Ceilings
Deliverables: 3D Revit modeling with Structural coordination



SOFTWARE USED



BIM TRACK



revizto



GoToMeeting



TeamViewer



WHY CHOOSE US



RFramer LLC has offices based in the US and India



Expertise:

Cumulative 40 years of experience working exclusively on framing modeling for RFramer.



Team:

Experienced, professional, highly efficient and dedicated team.



Quality:

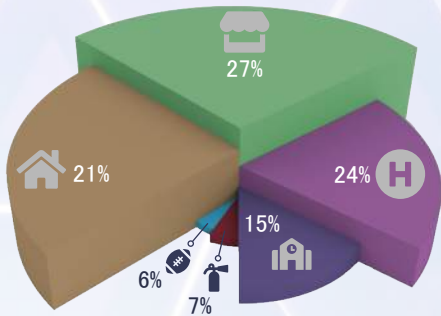
QA/QC based on customized checklists and automated processes.



Support:

Available for meetings and proactive in the coordination and resolution of project specific issues/conflicts.

OUR WORK



We have collectively worked on 1.35 Million Square feet of framing area and completed 32 projects located all around the USA

Formed by partners with more than 30 years of framing experience and 14 years of BIM and technology expertise.

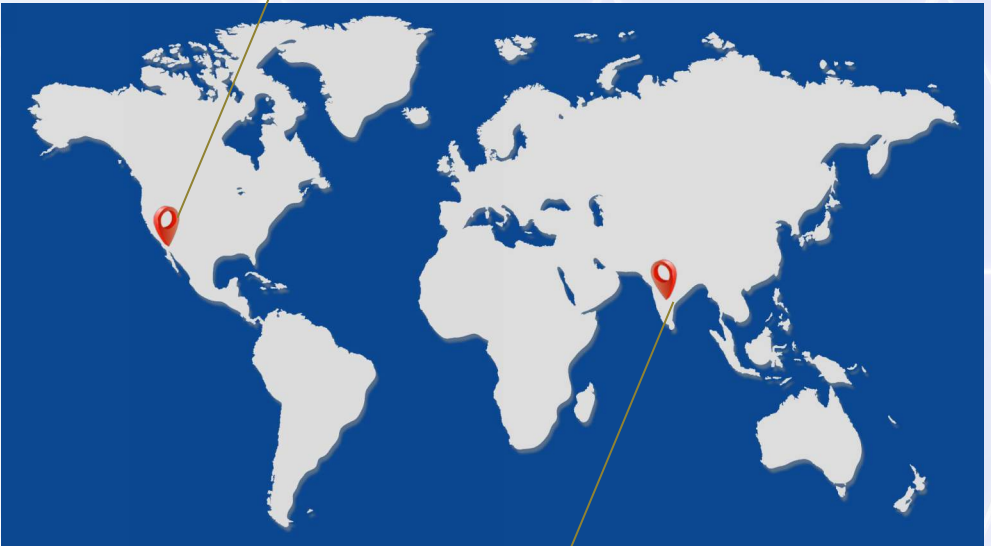
- RECREATIONAL:** 2 Projects - 1,240,291 SF
- FIRE:** 2 Projects - 65,327 SF
- EDUCATIONAL:** 5 Projects - 181,444 SF
- HOSPITAL:** 8 Projects - 1,181,909 SF
- COMMERCIAL:** 9 Projects - 5,733,779 SF
- RESIDENTIAL:** 6 Projects - 1,780,491 SF



WHEREABOUTS

US OFFICE

San Diego, California



INDIA OFFICE

Hyderabad, Telangana

RFramer LLC has offices in USA and INDIA with a first point of contact in the USA.

RF-C-030

2850015

RF-C-012

2500000

WE BUILD IT FIRST

RF-C-032

1300000

RF-C-025

3000000

RF-C-028

457000

RF-C-010

320000

RF-F-027

1215291

RF-H-009

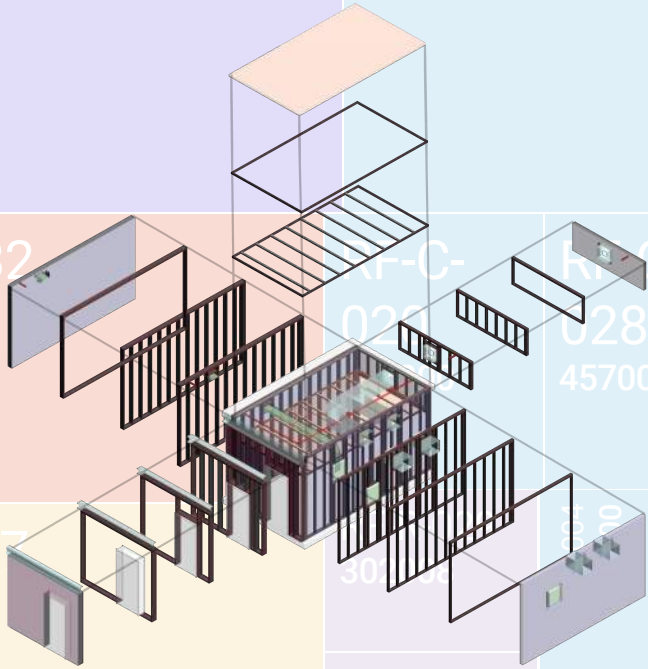
3000000

RF-H-009

200000

RF-H-005

247330



RFramer LLC

WE BUILD IT FIRST.



info@rframer.com